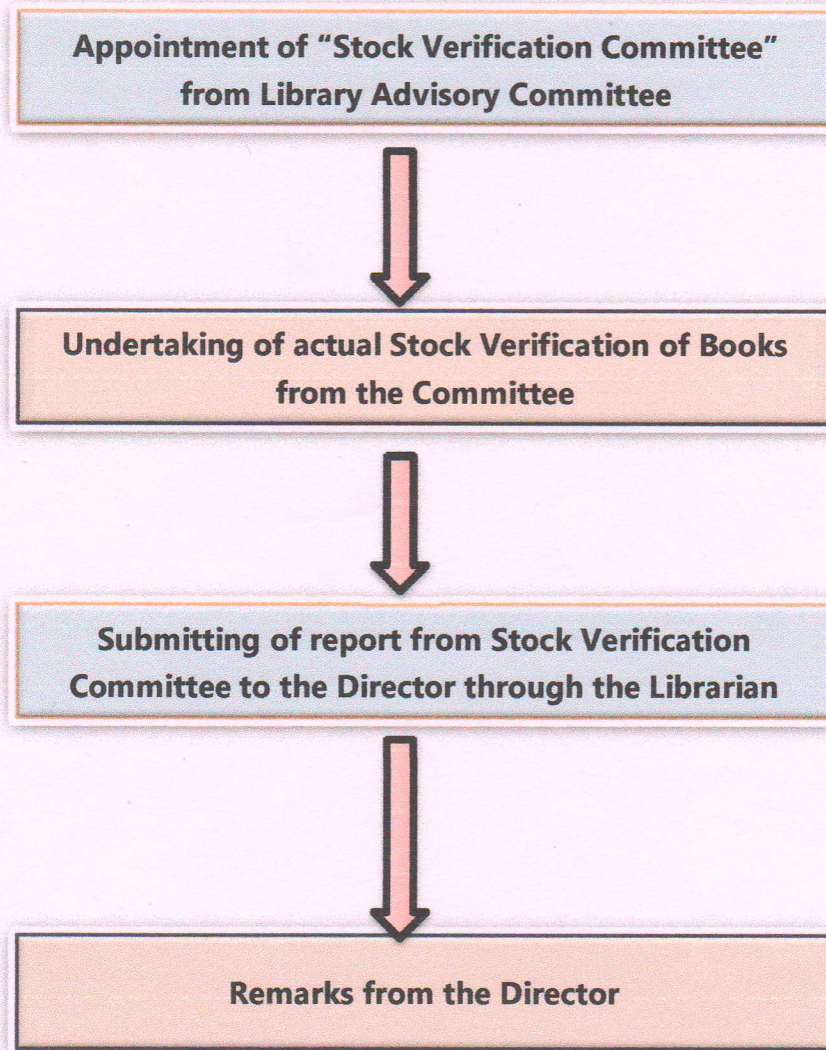


# Knowledge Resource Centre

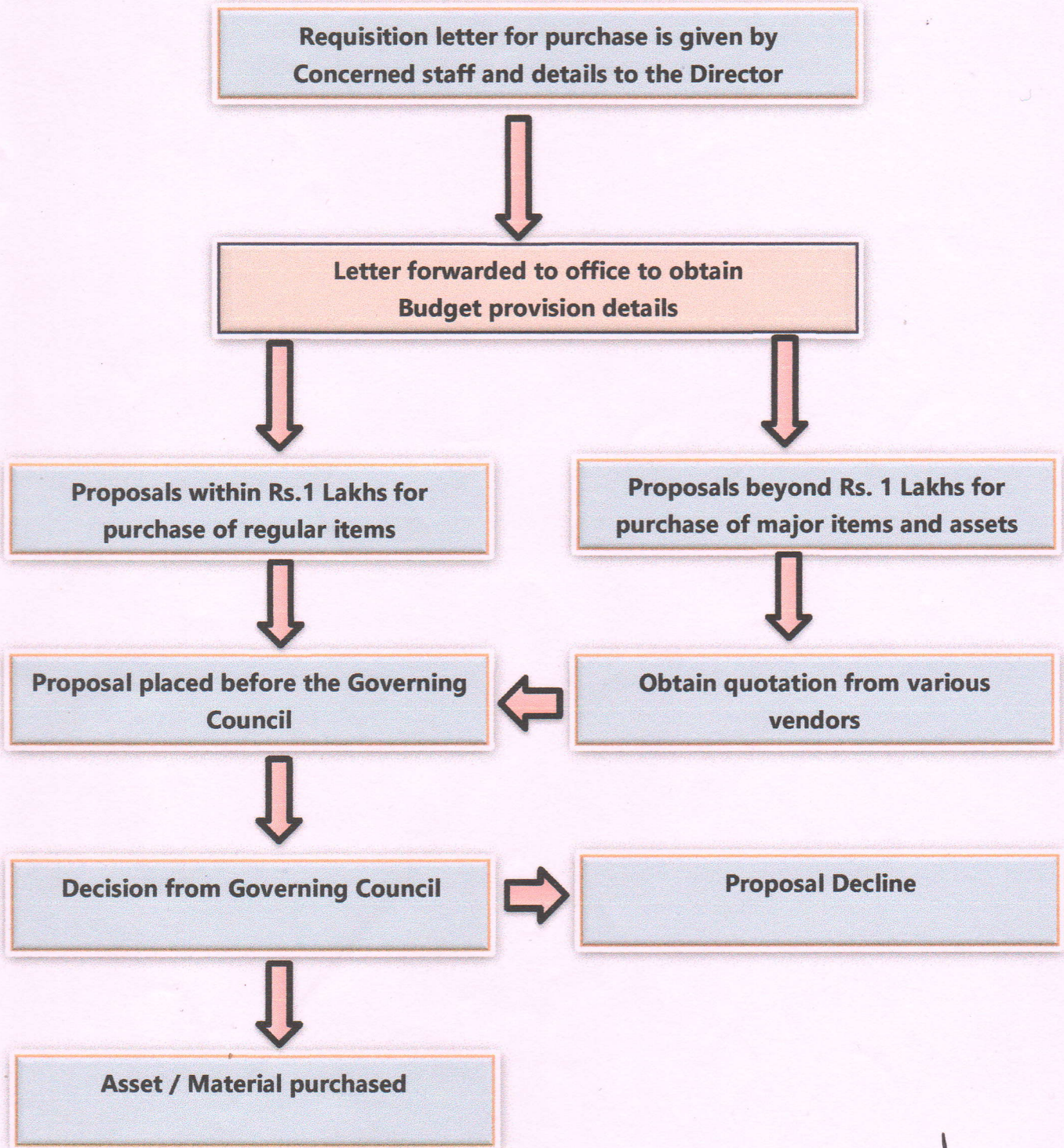
## Process of Stock Verification of Books

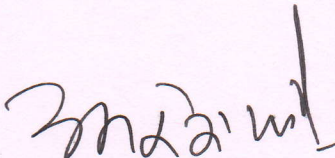


*Zindani*  
DIRECTOR  
K.L.S. Institute of Management  
Education & Research

# KLS IMER

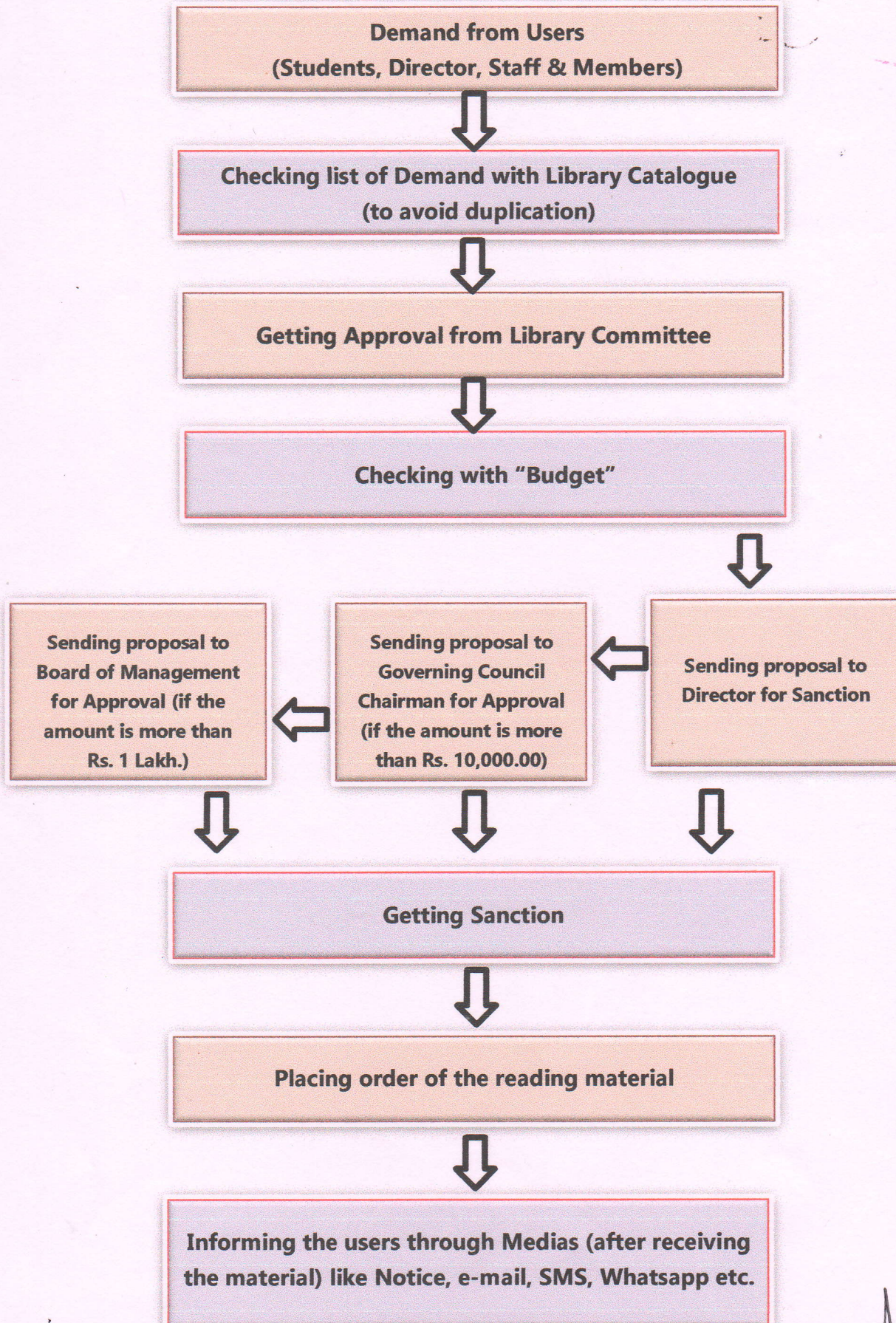
## Materials and Assets Procurement Process



  
DIRECTOR  
KLS Institute of Management  
Education & Research

# Knowledge Resource Centre

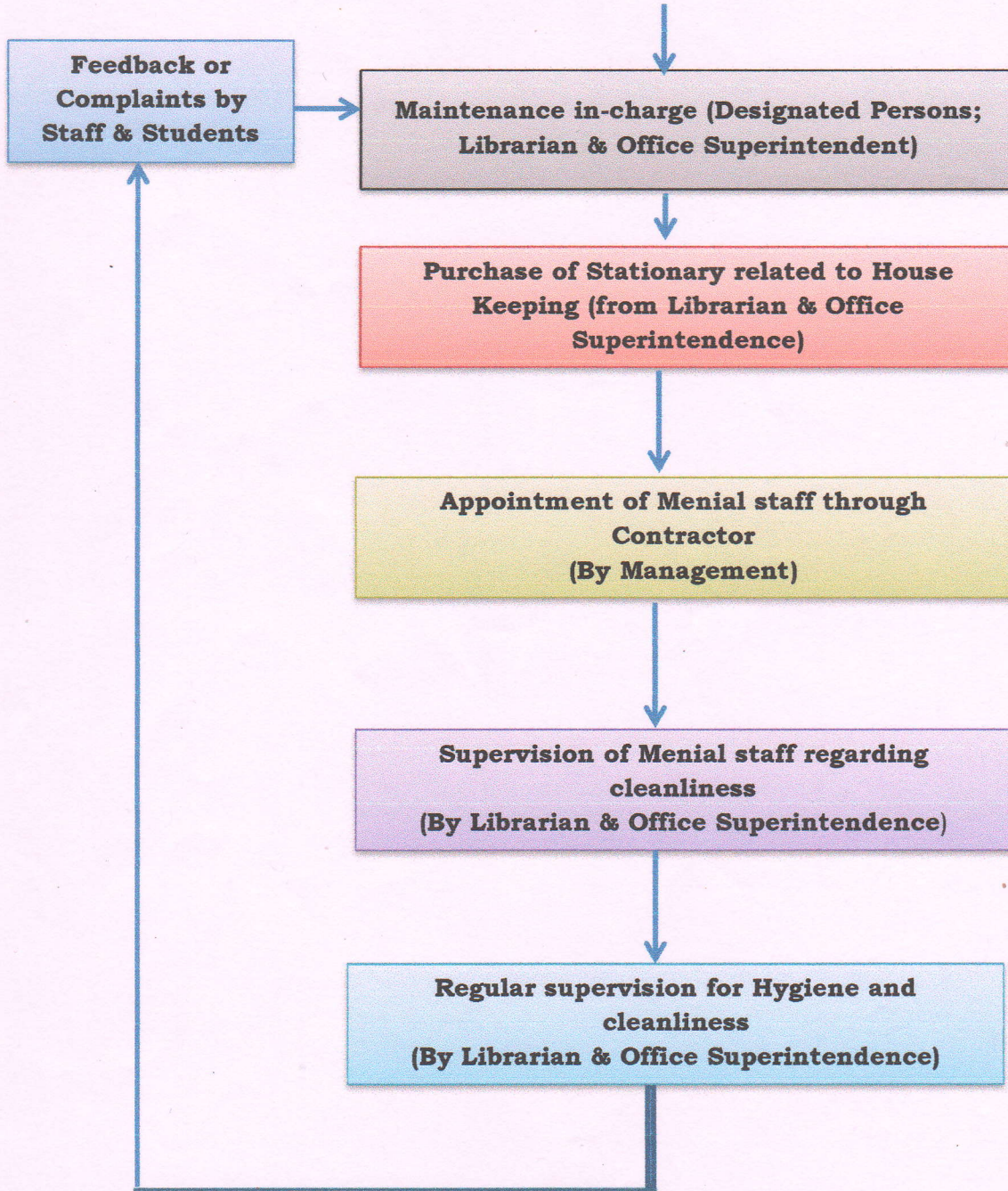
## Reading Materials Procurement Process



*Zindani!*

# KLS' IMER

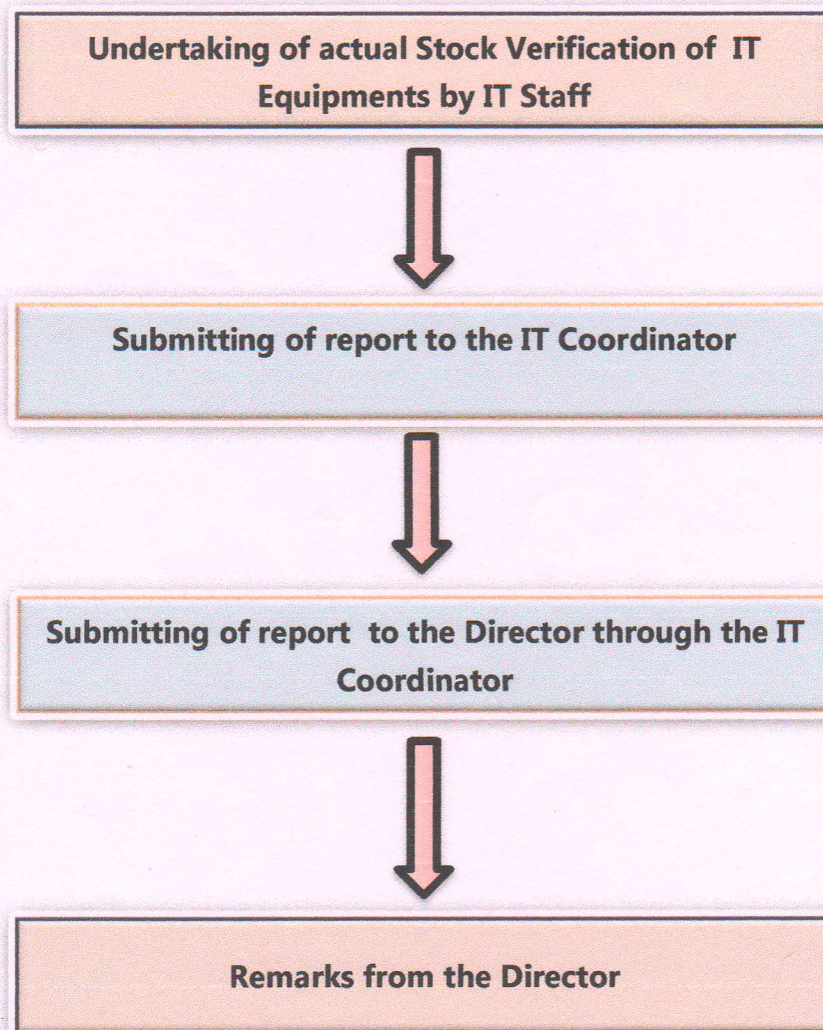
## House Keeping Maintenance Process



*[Handwritten Signature]*  
DIRECTOR  
K.L.S. Institute of Management  
Education & Research

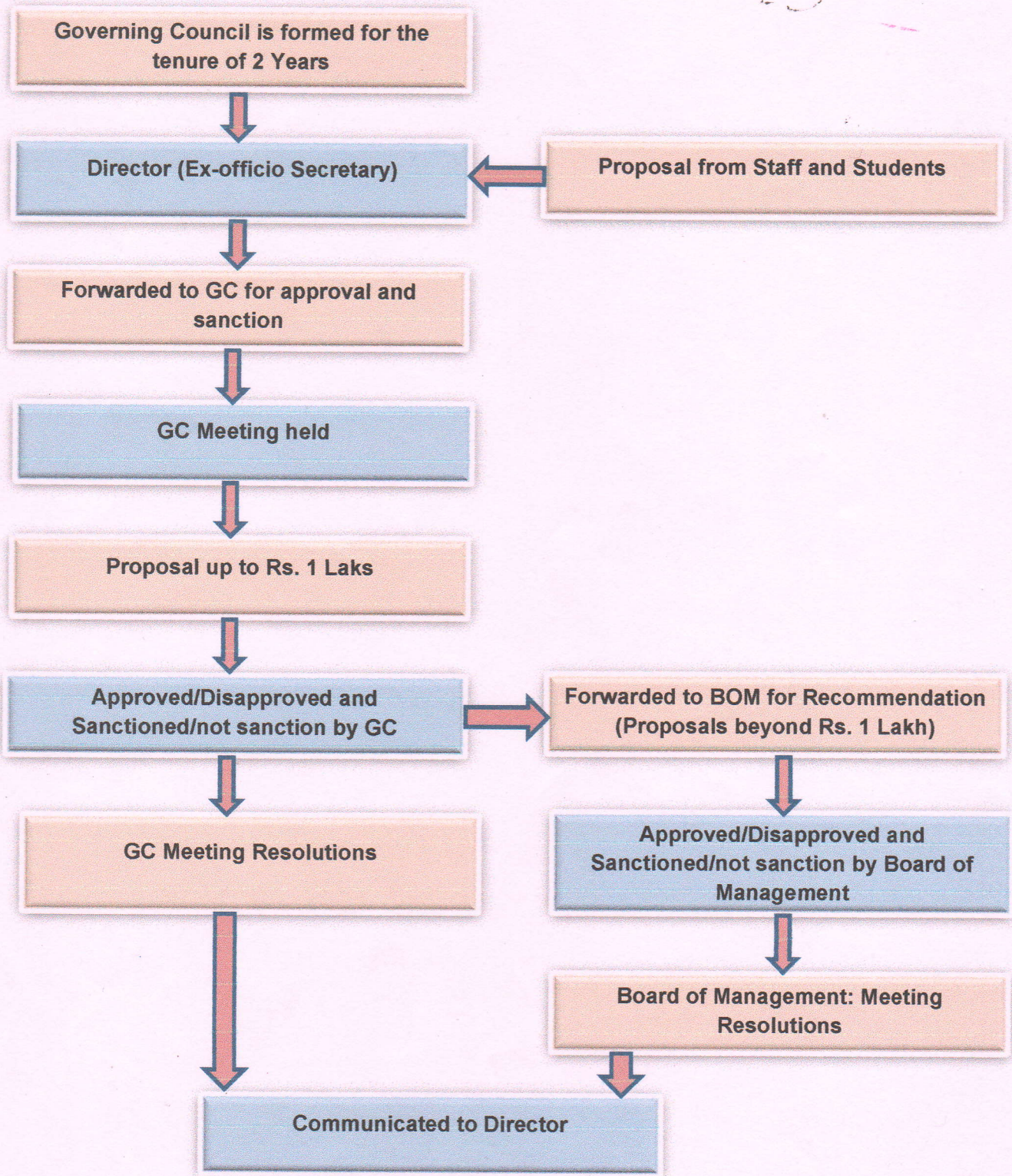
## IT Centre

### Process of Stock Verification of IT Equipment



*30/2/2011*  
DIRECTOR  
K.L.S. Institute of Management  
Education & Research

**Formation of G.C. and its role in Management of the Institution  
Communicated by Director, proposals from Staff & Students.**



*[Handwritten Signature]*  
**DIRECTOR**  
K.L.S. Institute of Management  
Education & Research